

FALL 2024



SOOKE REGION
MUSEUM & VISITOR CENTRE

School Programs
GRADES 6, 7, 8

Visit the Sooke Region Museum,
for fun and engaging activities with
BC Curricular Competencies
Grades 6, 7, 8.
15 minute activities, up to 5 stations,
\$100 / class
up to 40 students per visit

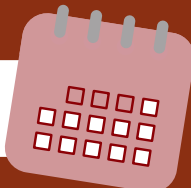
**CURRENTLY
BOOKING:**

Nov. 27, 28, 29

Dec. 4, 5, 6

Dec. 11, 12, 13

Book Your Class!



Sooke Region Museum & Visitor Centre

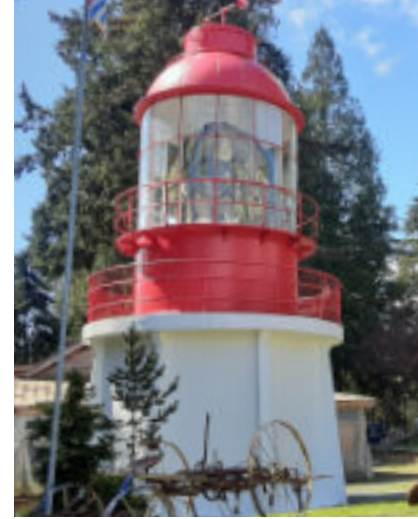
For more information

Phone: 250-642-6351

Email: programs@sookeregionmuseum.ca

sookeregionmuseum.ca





Programs include a variety of stations.

You can select activities at the time of booking.

School programs start at 10 AM with a welcome circle. Groups of 8 students with an adult participate in 5 different 15-minute activities.

BANNOCK

Nearly every Indigenous community across North America has their version of making bannock. Most families have a favorite recipe for bannock they pass down through generations. Before Europeans came, Indigenous Peoples made a version of bannock from Camas bulbs (purple spring flowers). Bulbs were cooked for a long time over low heat in a cook pit, then processed: flattened or chopped, dried and stored until winter. Students will have the opportunity to cook over an open fire and enjoy their bannock with jam.

MOSS COTTAGE - ALL GRADES

Believed to be the oldest standing settler home west of Victoria, Moss Cottage was built in 1869-70. In 1902, Matilda Gordon moved into the home where she raised her two children, Alice and Harry. Students are welcomed inside by an interpreter in the character of Matilda "Aunt Tilly" Gordon in 1902. Household tasks are demonstrated by Aunt Tilly as she chats with visitors.

MUSEUM PERMANENT EXHIBITS

Visit includes natural history, First Nations longhouse, basketry, settler history with mining, sealing, agriculture, fishtraps and forestry. Learn about landmarks like the Belvedere Hotel and the Bear Creek Trestle. Guided tour or self-guided Treasure Hunt.

MUSEUM DETOURS EXHIBIT - UNTIL DEC 2025

Getting around the Sooke Region is not always done in the expected ways! Visit this temporary exhibit to be inspired by local innovations in transportation. Learn about how locals have responded to the challenges of geography, and what influences how people move around.

THEN AND NOW

Learn from yesterday with hand-powered tools from the past such as carders, spindles or washboards, students will get to try them out! Students are encouraged to think about how their life would change if they had to do this kind of work every day and what kind of environmental impact we create with our modern day efficiency.

TRIANGLE ISLAND LIGHTHOUSE

The ocean was the historic gateway to Sooke and surrounding coastal communities. Challenged by fierce storms, fog and unexpected currents, many vessels came to grief on the reefs and rugged shores of the west coast of Vancouver Island. Students will learn about the daily life of lighthouse keepers, the science of the Fresnel lens, and how this lighthouse came to be at the Sooke Region Museum.

ARTIFACT INQUIRY

Artifacts are the driving force behind telling the history of the Sooke Region at the museum. In this session, students get up close to the artifacts in the collection. Artifacts can range from human-made to natural specimens, and students will see a selection of some of the most interesting in the museum's collection. Students will ask questions and make inferences to tell the story about each artifact. Why were they important? How were they used in Sooke? Do we use similar artifacts today?

FORESTRY

How does the forest continue to be an economic driver in our area? Logging camps and mill communities have shaped our region in physical, social and economic ways. When camps were first established, logging companies made housing available, and encouraged married loggers to move their families to camp. Eventually these small communities evolved into small towns with schools, stores, and other services. Today students will take a guided walk along our Forestry Trail and learn about how our forests shaped our past and continue to sustain us in the future.

SECRET STORAGE TOUR

There's always more to see than what meets the eye at the museum! Students will have the opportunity to access the downstairs collections storage areas and learn about the other artifacts in the collection. Topics around what happens to objects when they are donated, why people donate their items, how are objects kept in storage and the importances of retaining these objects. Students are encouraged to think about what objects could be added to the collection to help tell the story of the Sooke Region.

CURRICULAR COMPETENCIES

GRADE 6

- Use Social Studies inquiry processes and skills to ask questions; gather, interpret, and analyze ideas; and communicate findings and decisions
 - Construct arguments defending the significance of individuals/ groups, places, events, or developments
 - Ask questions, corroborate inferences, and draw conclusions about the content and origins of a variety of sources, including mass media
 - Sequence objects, images, or events, and recognize the positive and negative aspects of continuities and changes in the past and present
 - Differentiate between short- and long-term causes, and intended and unintended consequences, of events, decisions, or developments
 - Take stakeholders' perspectives on issues, developments, or events by making inferences about their beliefs, values, and motivations
 - Make ethical judgments about events, decisions, or actions that consider the conditions of a particular time and place, and assess appropriate

GRADE 7

- Use Social Studies inquiry processes and skills to ask questions; gather, interpret, and analyze ideas; and communicate findings and decisions
- Assess the significance of people, places, events, or developments at particular times and places (significance)
- Explain different perspectives on past or present people, places, issues, or events, and compare the values, worldviews, and beliefs of human cultures and societies in different times and places (perspective)

GRADE 8

- Use Social Studies inquiry processes and skills to ask questions; gather, interpret, and analyze ideas; and communicate findings and decisions
- Identify what the creators of accounts, narratives, maps, or texts have determined is significant (significance)
- Determine which causes most influenced particular decisions, actions, or events, and assess their short-and long-term consequences (cause and consequence)
- Human responses to particular geographic challenges and opportunities, including climates, landforms, and natural resources
- Scientific and technological innovations
- Interactions and exchanges of resources, ideas, arts, and culture between and among different civilizations
- Exploration, expansion, and colonization
- Changes in population and living standards